



Washoe County School District

WCSD OFFICE OF ACADEMICS

ASSESSMENT DEPARTMENT



PEARSON

DRA

Developmental Reading Assessment



A Parent's Guide to the DRA Assessment

Where can I get more information about DRA?

The Developmental Reading Assessment (DRA) is published by Pearson Education. For more information on the DRA Assessments, visit their website at:

www.pearsonschool.com

For questions in regard to your child's performance, contact your child's teacher or school principal.

Our mission...

is to create an education system where all students achieve academic success, develop personal and civic responsibility, and achieve career and college readiness for the 21st century.



Only by working together, can we fulfill our urgent commitment of guiding every WCSD child, by name and face, to graduation.



Washoe County School District

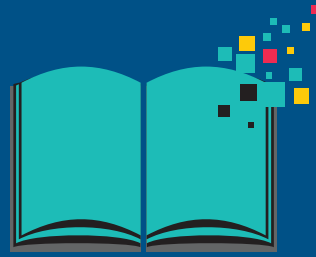
Washoe County School District
425 East Ninth Street
Reno, NV 89512
(775) 348-0200

Tips for Parents



The DRA assessment is more about finding an independent reading level and less about assigning a grade or score. Here are a few tips to help your child achieve his or her reading goals.

- Meet with your child's teacher as often as needed to discuss his or her progress.
- Provide a variety of books and magazines for your child to read at home. Also, encourage your child to reread books.
- Create routines at home that support reading.
- Encourage problem-solving. When reading, give your child time to work things out on their own before providing assistance.
- Talk to your child about what they are reading and encourage him or her to engage in conversation about what he or she is reading.
- Ask your child to write! Write grocery lists, to do lists, notes to family and friends, journals, etc.



What Every Parent Needs to Know About DRA...

Good readers enjoy reading, have favorite books, authors, and genres. They talk about books and recommend favorites as well as construct meaning as they read and share their understanding of what they read. (Developmental Reading Assessment Teacher Guide, 2006)

What is the DRA?

The main goal of any reading program is to help students become proficient and enthusiastic readers for a variety of purposes. The Developmental Reading Assessment (DRA) is a benchmark assessment that is designed to help kindergarten through second grade teachers reach this goal. The DRA provides a tool for teachers to systematically observe, record and evaluate a student's reading progress over time.

The DRA is a two-part assessment that is conducted through a one-to-one conference with the teacher. First, the student reads a selected leveled text, followed by retelling the information. The retelling may be completed orally or in writing, depending on the reading level of the student.

Who takes this test?

Currently, all students in grades K–2 are given the DRA reading assessment. However, teachers in other grade levels may give this assessment to their students.

When will students be assessed?

All kindergarten students are given the DRA three times a year: fall, winter, and spring. Grades 1–2 are given the DRA in the winter and spring only. Check with your child's teacher for specific dates.

What are the benefits of the DRA assessment?

DRA assessments support the Common Core State Standards. The results from DRA provide teachers with accurate and timely information on a student's current independent reading level, identify what the student needs to learn next, and finds areas where significant growth has occurred.

Is DRA the only assessment my child is given?

DRA is only one assessment that your child takes throughout the school year. Please contact your child's teacher to learn about other assessments being administered in the classroom or at the school.

No single assessment provides a full picture of your child's abilities and achievements. Each assessment that your child participates in contributes to the whole picture and provides important decisions about your child's education.



What is a DRA level?

The DRA level is a reading score that is based on a developmental reading continuum. The levels range from a level A up to a Level 80, with typical second graders reaching a Level 28 by the end of the year. The student's DRA reading level indicates where the student is currently reading at an independent level. The chart on the right shows the DRA levels that students typically reach by the end of a given benchmark window.

Grade	Winter	Spring
Kindergarten	2	4
First Grade	10	16
Second Grade	20	28